



DISCOUNT
Security Cameras

420 Line C-Mount with Audio

Model: CS420

Solid metal color C-Mount camera with a Sony 420 line CCD makes it an affordable combination. Nice brushed aluminum finish blends in with most decor. Will accept C or CS mount lenses with or without auto iris. Audio mic built in!

Specifications

$\frac{1}{3}$ " Sony CCD Image Sensor

Min Illumination: 1.0 lux @ F1.2

Resolution: 420 lines

Audio

Auto Iris Control

DC/Video Drive Lens supported

C Mount or CS Mount adjustable

BLC, AE, AWE Control

Power Supply: 12V DC

\$75⁰⁰



HiRes C/CS Mount

Model: KCC550

Our super low lux full OSD display and 12V DC/24V AC C/CS mount camera offers excellent resolution and low Lux for an unbeatable combination.

- $\frac{1}{3}$ " Sony Super Had CCD

- 550 Lines

- C/CS Mount Lens

- 0.0002 Lux

- OSD, DNR

Specifications

$\frac{1}{3}$ " Sony Super Had CCD

Min Illumination: 0.0002 Lux (sensitivity high)

Resolution: 550 Lines

C Mount or CS Mount selectable

OSD, DNR

AGC, WB, AWT, SENSE UP

S/N Ratio >50dB

Operating Temperature: -10°C to 50°C

Power Supply: 12V DC/24V AC, 280mA

\$185⁰⁰

Lens Not Included!



On
Screen
Display

0.0002
Lux

HiRes C/CS Mount

Model: KCC560S

Our wide dynamic range, super low lux full OSD display and 12V DC/24V AC C/CS mount camera offers highest resolution and lowest lux for an unbeatable combination.

- $\frac{1}{3}$ " Sony Super Had CCD

- 560 Lines

- C/CS Mount Lens

- 0.0002 Lux

- OSD, DNR, WDR

Specifications

$\frac{1}{3}$ " Sony Super Had CCD

Min Illumination: 0.0002 Lux (sensitivity high)

Resolution: 560 Lines

C Mount or CS Mount selectable

OSD, DNR, WDR

AGC, WB, AWT, SENSE UP

S/N Ratio >50dB

Operating Temperature: -10°C to 50°C

Power Supply: 12V DC/24V AC, 280mA

Wide
Dynamic
Range

\$266⁰⁰

Lens Not Included!



On
Screen
Display

0.0002
Lux

Indoor Camera Mounting Bracket

Model: C-BRACKET
Aluminum construction. Works with all indoor c-mount cameras.

\$6⁰⁰



Outdoor Housing Mounting Bracket

Model: FOB
This aluminum coated mounting bracket works well with any outdoor camera housing.

\$15⁰⁰



Outdoor Camera Housing

Model: FOH
Weatherproof flip open camera housing. Metal construction with glass front window. Accepts "C" and "CS" mount cameras with zoom lens.

\$22⁰⁰

Specifications

Size mm (DxWxH): 330 x 100 x 120 (From Peak = 385)
Max Camera Size mm (DxWxH): 160 x 85 x 70
Window Area (mm): 67 x 57
Plate Glass Weight: 2850gm

Outdoor Camera Housing w/Built-In Heater

Model: FOHE
Weatherproof flip open camera housing. Metal construction with glass front window. Accepts "C" and "CS" mount cameras with zoom lens. Requires 24 vac power supply.

\$40⁰⁰

Specifications

Size mm (DxWxH): 330 x 100 x 120 (From Peak = 385)
Max Camera Size mm (DxWxH): 160 x 85 x 70
Window Area (mm): 67 x 57
Plate Glass Weight: 2850gm



Varifocal CS-Mount Lens for 1/3" Cameras



Model:38AVF
3.5 - 8 mm lens. Auto iris.



\$29⁰⁰

Model:212AVF
2.8 - 12 mm manual zoom lens. Auto iris.



\$49⁰⁰

Model:660AVF
6 - 60 mm manual zoom lens. Auto iris.



\$55⁰⁰

Model:5100AVF
5 - 100 mm manual zoom lens. Auto iris.



\$82⁰⁰

CS-Mount Lenses

CS-Mount Lens with manual zoom and no iris. Allows the widest angle without major fisheye distortion.

Model: 4MM
4mm CS-Mount Lens

Model: 8MM
8mm CS-Mount Lens

Model: 16MM
16mm CS-Mount Lens

Your Choice
\$15⁰⁰



Toll Free **866-301-7680**

Color Outdoor Bullet Camera

Model: CL102

This is your basic indoor/outdoor color bullet camera. Great resolution with a fixed 4mm lens.

- Advanced 1/4" Sharp Image CCD
- Weatherproof anodized aluminum housing for outdoor use
- Adjustable bracket for wall and ceiling mount
- BNC Connection

\$59⁰⁰



Specifications

1/4" Sharp CCD

Min Illumination: 0.1 Lux @ F1.2

Resolution: 420 lines

White Balance: Auto

Gain Control: Auto

S/N Ratio >50db

Auto Iris: A.E.S.

Operating Temperature: -10°C to 50°C

Weatherproof

Wall mount bracket

Power Supply: 12V DC

Infrared Bullet Camera

Model: 420BE

Great economical camera at best pricing. Split lens design for no glare back.

- 1/4" Sony Super HAD CCD
- Adjustable bracket for wall or ceiling mount
- BNC Connection

\$59⁰⁰



1/4" Sony Super HAD CCD

Lens: 6mm lens

Split lens

Resolution: 420 Line

35 IR LEDs

IR Distance: 40 ft.

S/N Ratio > 48dB

AWB,AGC

Dimensions 118 x 68.5 x 66.5mm

Power Supply: 12V DC, 240mA max

Infrared Bullet Camera

Model: IRB420

- Bright night image
- Weatherproof aluminum housing for outdoor use
- Wide angle 3.6mm lens
- Adjustable wall or ceiling mount

\$79⁰⁰



1/3" Sony Color CCD

Min Illumination: 0 Lux

Lens: 3.6mm

Resolution: 420 Lines

26 IR LEDS

IR Distance: 35 ft

Auto Gain Control

S/N Ratio >50db

Gamma: 0.45

Shutter Speed: 1/50 - 1/12,000

Video Output: 1.0V p-p, 75 ohms

Operation Temperature: -5°C to 45°C (23°F - 113°F)

Power Supply: 12V DC, 400 mA

Infrared Bullet Camera

Model: IRB540

- Bright night image
- Weatherproof aluminum housing for outdoor use
- Wide angle 3.6mm lens
- Adjustable wall or ceiling mount

\$99⁰⁰



1/3" Sony Color CCD

Min Illumination: 0 Lux

Lens: 3.6mm

Resolution: 540 Lines

26 IR LEDS

IR Distance: 35ft

Auto Gain control

S/N Ratio >50db

Gamma: 0.45

Shutter Speed: 1/50 - 1/12,000

Video Output: 1.0V p-p, 75 ohms

Operation Temperature: -5°C to 45°C (23°F - 113°F)

Power Supply: 12V DC, 400 mA

Outdoor Infrared Color Camera

Model: CL420

Sharp color during day and excellent clarity at night.

- 420 lines
- Weatherproof housing
- Adjustable bracket
- Crisp infrared image

\$79⁰⁰



Specifications

1/3" Sony Super HAD CCD

Image Size: 510 x 492 NTSC

420 Lines

S/N Ratio >48dB

0 Lux

Lens: 3.6mm (Fixed)

White Balance: Auto

Operating Temp -10°C to 50°C

Dimension (mm): 50 W x 50 H x 67 D

Weight: Approx 400g

Power Supply: 12V DC 400ma max

Korean Made

Outdoor Infrared Color Camera

Model: CL480

Sharp color during day and excellent clarity at night.

- 480 lines
- Weatherproof housing
- Adjustable bracket
- Crisp infrared image

\$99⁰⁰



Specifications

1/3" Sony Super HAD CCD

Image Size: 768 x 494 NTSC

480 Lines

S/N Ratio >48dB

0 Lux

Lens: 3.6mm (Fixed)

White Balance: Auto

Operating Temp -10°C to 50°C

Dimension (mm): 50 W x 50 H x 67 D

Weight: Approx 400g

Power Supply: 12V DC 400ma max

Korean Made

22X Day/Night Varifocal Zoom Module Camera

Model: CM22X

This zoom camera has a built-in powerful 22X zoom 3.9 to 85.8mm varifocal lens. The focus and zoom can be controlled via buttons on the back of camera. Also features a built-in On Screen Display (OSD) menu lets you adjust the backlight compensation, focus, zoom and camera id settings.

- Built-in 3.9 to 85.8mm Varifocal Lens
- Day / Night
- On Screen Display

\$175⁰⁰



Specifications

1/4" Sony Day / Night CCD

Resolution: 470 Lines

Min Illumination: 0.5 Lux

Lens: 3.9 to 85.8mm

Signal to Noise Ratio: Greater than 50db

White Balance: Auto

Gain Control: Auto

Electronic Shutter: On/Off Switchable

Back Light Compensation: On/Off Switchable

Connection Type BNC

Power Supply: 12V DC

27X Day/Night Varifocal Zoom Module Camera

Model: CM27X

It comes with a powerful 27X zoom 3.2 to 86.4mm varifocal lens. The focus and zoom can be controlled via buttons on the back (see additional photos), or via RS-485 Pelco-D protocol. The built-in On Screen Display (OSD) menu lets you adjust the backlight compensation, focus, zoom, and camera id. It can be used indoors, or outdoors in a housing

- Built-in 3.2 to 86.4mm Varifocal Lens
- Day / Night
- On Screen Display
- RS-485 control



\$199⁰⁰

1/4" Sony Day/Night CCD

Resolution: 480 Lines

Min Illumination: 0.1 Lux (Day/Color), 0.01 Lux (Night/BW)

Lens: 3.2 to 86.4mm

Protocol: Pelco-D

Signal to Noise Ratio: Greater than 48db

White Balance: Auto

Gain Control: Auto

Electronic Shutter: On/Off Switchable

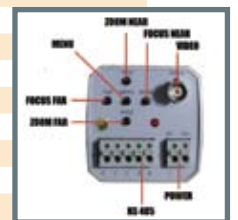
Back Light Compensation: On/Off Switchable

Connection Type BNC

Operation Temp: 14°F to 122°F

Dimensions (mm): 58 x 58 x 103

Power Supply: 12V DC



Toll Free **866-301-7680**

HiRes IR Varifocal Bullet Camera

Model: RE420IBV

Great professional IR camera that has clean clear static free day or night vision. Perfect for that professional look, airports, malls, stores or anywhere where aesthetics is important.

- 1/3" Sony SS-II RM 420 line
- Wall or ceiling mount
- 80ft IR Visible Distance
- LED constant current control
- 4-9mm Manual Varifocal lens



Specifications

1/3" Sony SS-II RM 420 line

Lens: 4-9 mm

Resolution: 420 lines

48 IR LEDS

IR Distance: 80 ft

S/N >52 dB

AGC, Auto Lens

Auto BLC, AGC

IP65

Weight 0.9Kg

Operating Temperature: -20°C to 50°C

Power Supply: 12V DC, 300mA

\$119⁰⁰

HiRes IR Varifocal Bullet Camera

Model: RE540IBV

Great professional IR camera that has clean clear static free day or night vision. Perfect for that professional look, airports, malls, stores or anywhere where aesthetics is important.

- 1/3" Sony 540TVL HQ1
- Wall or ceiling mount
- 80ft IR Visible Distance
- LED constant current control
- 4-9mm Manual Varifocal lens



Specifications

1/3" Sony HQ-1 Super HAD CCD

Lens: 4-9 mm

Resolution: 540 lines

48 IR LEDS

IR Distance: 80 ft

S/N >52 dB

AGC, Auto Lens

Auto BLC, AGC

IP65

Weight 0.9Kg

Operating Temperature: -20°C to 50°C

Power Supply: 12V DC, 300mA

\$189⁰⁰

Color Outdoor IR Varifocal Bullet Camera

Model: MR420

Excellent outdoor varifocal infrared camera.

- 125 ft. IR view distance
- Built in 54 IR LED
- Exterior adjustments for focus & zoom (no need to remove housing)
- Cable management bracket

\$125⁰⁰



Specifications

TV System: NTSC

1/3" Sony Super HAD CCD

Resolution: 420 Lines

Video Output: 1.0 Vp-p 75 Ohms

Min. Illumination: 1 LUX (0.2 LUX with IR)

Shutter Speed: 1/60-1/100,000 sec. for NTSC

Backlight Compensation: Auto

White Balance: Auto

Gamma Correction: > 0.45

S/N Ration: Over 50dB at AGC off

Waterproof Rating: IP55

Operating Temperatures: -4°F to 122°F

Dimensions (mm): 85 D x 124 L

Weight: 680g (1.5 lbs.)

Power Supply: 12V DC, 1 Amp

Color Outdoor IR Varifocal Bullet Camera

Model: MR540

Excellent outdoor varifocal infrared camera.

- 125 ft. IR view distance
- Built in 54 IR LED
- Exterior adjustments for focus & zoom (no need to remove housing)
- Cable management bracket

\$189⁰⁰



Specifications

TV System: NTSC

1/3" Sony Super HAD CCD

Resolution: 540 Lines

Video Output: 1.0 Vp-p 75 Ohms

Min. Illumination: 1 LUX (0.2 LUX with IR)

Shutter Speed: 1/60-1/100,000 sec. for NTSC

Backlight Compensation: Auto

White Balance: Auto

Gamma Correction: > 0.45

S/N Ration: Over 50dB at AGC off

Waterproof Rating: IP55

Operating Temperatures: -4°F to 122°F

Dimensions (mm): 85 D x 124 L

Weight: 680g (1.5 lbs.)

Power Supply: 12V DC, 1 Amp

3 Axis IR Varifocal Bullet Camera

Model: QNIB540V

- Wall/ceiling mount
- Cable management bracket
- 360° adjustable
- 70 ft. IR Visible Distance
- 4-9mm Manual Varifocal Lens

Specifications

- 1/3" Sony CCD
- Resolution: 540 lines
- Min. Illumination: 0.0 Lux
- 36 IR LEDs
- IR Distance: 70 ft.
- AGC, Auto Lens
- Lens: 4-9 mm
- S/N Ratio: 48db
- Operating Temp: -10°C to 45°C
- Power Supply: 12V DC

Call



Long Range HiRes IR Varifocal Camera

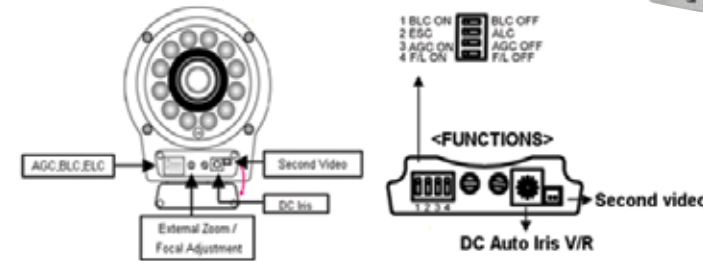
Model: KCIB550V

Our super solid vandal resistant camera, includes a incredible 5-50mm zoom lens with high power IR LED's to make the best long range IR solution. Throw in a front panel to adjust zoom, focus and video to round out the best of all worlds.

- 150 ft. IR view distance
- Low light 0.1 Lux
- 5 to 50mm DC Auto IRIS Lens
- Cable management bracket
- Vandal Resistant
- External Zoom / Focal Adjustment
- Function : AGC,BLC
- Installer video out



\$299⁰⁰



Specifications:

- 1/3" SONY Super HAD HQ1 CCD
- Resolution: 550 Lines
- Pixels: 768 x 494
- 12 Hi Power LEDs & CDs Sensor
- Min. Illumination: 0.3Lux (Color), 0.1Lux (B/W)
- Lens: 5 - 50 mm
- IR Range: 150 ft.
- S/N Ratio 50dB (AGC OFF)
- Flickerless, AGC Control
- White Balance, ATW
- Vandal Resistant Weatherproof Housing (IP66)
- Dimensions (mm): 97 x 107 x 173 D
- Weight: Appx. 4.5 lb.
- Operating Temp: -10°C to 50°C
- Power Supply: 12V DC 140mA/600mA Max

Long Range HiRes IR Varifocal Camera

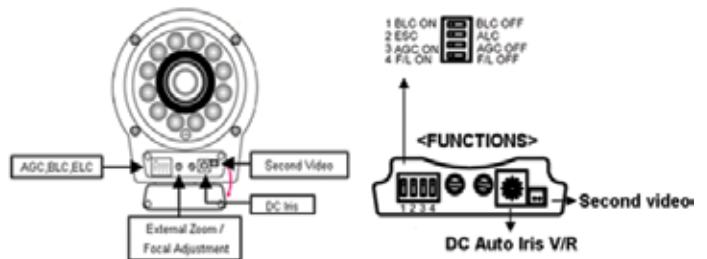
Model: KCIB560VS

Our super low lux vandal resistant camera, includes a incredible 5-50mm zoom lens and 0.0002 lux CCD with high power IR LED's to make the best long range IR solution. Throw in a front panel to adjust zoom, focus and video service connction to round out the best of all worlds.

- Super low light 0.0002Lux
- 200 ft. IR view distance
- 5-50mm zoom
- Cable management bracket
- Vandal Resistant
- External Zoom / Focal Adjustment
- Function : AGC,BLC
- Installer video out



\$389⁰⁰



Specifications:

- 1/3" Sony Super HAD HQ1 CCD
- Lens: 5 - 50 mm
- Resolution: 560 Lines
- Pixels: 811 x 508
- 12 Hi Power LEDs & CDs Sensor
- Min. Illumination: 0.0002 Lux (sensitivity high)
- IR Range: 200 ft.
- S/N Ratio > 48dB
- AGC, BLC, ESC
- Dimensions (mm): 97 x 107 x 173 D
- Power Supply: 12V DC 500mA

Toll Free **866-301-7680**

Color Dome Camera

Model: ECODOME

This color dome camera features good resolution and will easily mount to any ceiling... Great Price and easy installation.

\$55⁰⁰



Specifications

1/3" Sony CCD
Resolution: 420 lines
Lens: 3.6mm
Pixels: 512(H) x 492(V)
Min. Illumination: 0.4 Lux/F2.0
White Balance: Auto
Gain Control: Auto
BNC Connection
S/N Ratio >48db
Power Supply: 12V DC

HiRes Dome Camera

Model: KCD520

Professional design high resolution 520 line 3 axis dome camera

- 1/3" Sony Super HAD CCD
- 520 Line
- 0.3 Lux
- 3 Axis

\$89⁰⁰



Specifications:

1/3" Sony Super HAD HQ1 CCD
Resolution: 520 Lines
Min. Illumination: 0.3 LUX
Lens: 3.6mm
Dimensions (mm): 120 x 75
Weight: 200g
Power Supply: 12V DC

HiRes Dome Camera

Model: KCD550

Professional design high resolution 550 line 3 axis dome camera

- 1/3" Sony Super HAD CCD
- 550 Line
- 0.1 Lux
- 3 Axis

\$95⁰⁰



Specifications:

1/3" Sony Super HAD HQ1 CCD
Resolution: 550 Lines
Min. Illumination: 0.1 LUX
Lens: 3.6mm
Dimensions (mm): 120 x 75
Weight: 200g
Power Supply: 12V DC

HiRes Varifocal Armor Dome Camera

Model: 49VAD

Excellent vandal-proof design and low Lux CCD makes this camera a great solution for low light environment medium security area.

- 1/3" Sony Color CCD
- 520 Line Resolution
- f4.0 - f9.0 mm Varifocal Lens
- 0.15 Lux at F1.4
- Vandal-proof Housing Design (IPxx7)

\$109⁰⁰



Specifications

1/3" Sony Color CCD
Pixels: 771(H) x 492(V)
Resolution: 520 Lines
Min. Illumination: 0.15 Lux / F1.4
S/N Ratio > 48dB (AGC off)
Electronic Shutter 1/60 (1/50) to 1/100,000 sec
Lens: f4.0mm - f9.0mm
IRIS Mode: Auto
White Balance: ATW
Vandal-Proof Rating: IPxx7
Dimension (mm): 124.3 D x 92 H
Power Supply: DC12V DC 85mA

Varifocal Dome Camera

Model: KCD550V

Professional design high resolution 550 line 3 axis dome camera

- 1/3" Sony Super HAD CCD
- 550 Lines
- 3.5 - 16mm varifocal lens
- 0.3 Lux
- 3 Axis



Specifications:

- 1/3" Sony Super HAD HQ1 CCD
- Lens: 3.5 - 16mm Varifocal
- Resolution: 550 Lines
- Min. Illumination: 0.3 Lux CCD
- Pixels: 811 X 508
- S/N Ratio > 48dB
- 3 Axis
- Dimensions (mm): 120 x 75
- Power Supply: 12V DC

\$135⁰⁰

Varifocal WDR Dome Camera

Model: KCD560V

How can you beat a super LOW 0.0002 lux CCD, wide dynamic range, high resolution 560 line 3 axis dome camera with 4-9mm varifocal lens and a OSD menu at this price?

- 1/3" Sony Super HAD CCD
- 560 Lines
- 0.0002Lux
- 4 - 9mm varifocal lens
- WDR, OSD, SDNR, DSS
- Installer video out
- 3 Axis



\$215⁰⁰

Specifications:

- 1/3" Sony Super HAD HQ1 CCD
- Lens: 4 - 9mm Varifocal
- Resolution: 560 Lines
- Min. Illumination: 0.0002 Lux (sensitivity high)
- Pixels: 811 X 508
- S/N Ratio > 48dB
- 3 Axis Gimbal Bracket
- AWB, ATW, WDR, OSD, SDNR, DSS
- Installer video out
- Dimensions (mm): 135 x 100
- Weight 280g
- Power Supply: 12V DC

HiRes Varifocal Armor Dome Camera

Model: KCAD550V

Top of the line 550 line 3 axis varifocal armor dome with an incredible 2.8-11mm lens, this one is for you. Also includes conduit side connection and installers video pigtail for quick focusing without disconnecting from video wire run.

- 1/3" Sony Super HAD CCD
- Auto Iris Lens
- 3-Axis
- 2.8 - 11mm varifocal lens
- Vandal Resistant



\$199⁰⁰

Specifications:

- 1/3" Sony Super HAD HQ1 CCD
- Lens: 2.8 - 11 mm Varifocal
- Resolution: 550 Lines
- Pixels: 768 x 494
- 3-Axis
- S/N Ratio 45dB
- Auto Iris Lens
- AGC
- Vandal Resistant Weatherproof Housing (IP66)
- Operating Temp: -10°C to 50°C
- Dimensions (mm): 145 W x 100 D
- Weight 600g
- Power Supply: 12V DC/24 V AC 80mA



Model: KCBRK

High Res Outdoor Day/Night Varifocal Dome Camera

Model: WD540

Great armored camera for indoor or outdoor professional applications. Excellent picture quality is provided by the high resolution Sony Day / Night imaging chip. The 3-Axis wall mount bracket, 3 to 8mm varifocal lens, and easy dip switches for camera functions make it a dream to install and configure. DNR removes digital noise from the image, making it less grainy.

- Day / Night
- Indoor or Outdoor Use
- Vandal-resistant Dome
- Attractive 3-Axis Wall Bracket
- Digital Noise Reduction
- Easy DIP switch design for camera options
- Low Power Consumption



\$139⁰⁰

Specifications:

- 1/3" Sony Day / Night CCD
- Lens: 3.5 - 8mm Varifocal
- Resolution: 540 Lines
- Min. Illumination: 0.01 Lux
- BLC, AES, AGC, AWB (selectable)
- Horizontal Mirror option
- S/N Ratio +48dB (AGC off)
- Operating Temp: 14°F to 122°F
- Dome 5.2" Dia. x 5.9" H x 4.5" W
- Power Consumption < 100ma
- Power Supply: 12V DC (included)

IR Dome Camera

Model: ENIRD

Great indoor IR camera for any area that you need a clear image for day or night.

- Ceiling or Wall Mount
- BNC connection

Specifications:

1/3" Sony Super HAD HQ1 CCD

Resolution: 420 Lines

Lens: 3.6mm

S/N Ratio >48db

AWB, AGC, ES

12 IR LEDs

IR Range: 30 ft

Dimensions (mm): 110 x 60

Power Supply: 12V DC 240mA max

\$65⁰⁰

3 Axis



IR Ball Camera

Model: IRBD

White indoor 420 line 14 LED IR ball camera

- Ceiling or Wall Mount
- BNC connection

Specifications:

1/3" Sony Color CCD

Resolution: 420 TV Lines

14 IR LEDs

IR Range: 10 meters (32 ft.)

Lens: 3.6mm / F2.0

White Balance: ATW

Electronic Shutter: 1/60 to 1/100,000 sec.

Dimensions: 4" (Dia) x 3" (Height)

Power supply: 12V DC

\$65⁰⁰

3 Axis



HiRes IR Dome Camera

Model: KCIRD520

High resolution 520 line 3 axis dome camera with IR

- *1/3" Sony Super HAD CCD*
- *520 Line*
- *0.1 Lux*
- *3 Axis*
- *IR Range 30 ft.*

Specifications:

1/3" Sony Super HAD HQ1 CCD

Resolution: 520 Lines

Min. Illumination: 0.1 LUX

Lens: 3.6mm

IR Range: 30 ft

Dimensions (mm): 120 x 75

Weight: 200g

Power Supply: 12V DC

\$95⁰⁰

3 Axis



Color Outdoor Infrared Armor Ball Camera

This camera is weatherproof - so it can be used inside and out. It's infrared - so it can see during the day and at night.

- 1/3 inch Sony Super HAD CCD Sensor
- 3.6mm Lens
- 20 Infrared LEDs
- 45ft. IR view distance
- Metal armor dome housing
- Ceiling or wall mount



3 Axis

Model: ME420D
Resolution: 420 Lines

\$79⁰⁰

Specifications

- TV System: NTSC
- 1/3" Sony Super HAD HQ1 CCD
- Lens: 3.6mm
- S/N Ratio Over 50dB at AGC Off
- Dimensions (mm): 94 Dia X 70
- Power Supply: DC 12V 500mA

Model: ME540D
Resolution: 540 Lines

\$104⁰⁰

Color Outdoor Infrared Varifocal Armor Dome Camera

This camera is weatherproof - so it can be used inside and out. It's infrared - so it can see during the day and at night, and its varifocal - so it can see close up or distance. The focus and zoom controls are located externally for easy adjustment.

- 80ft. IR view distance
- Built in 36 IR LED
- Metal armor housing
- Exterior adjustments for focus & zoom (no need to remove housing)



3 Axis

Specifications

- 1/3" Sony Super HAD HQ1 CCD
- Lens: 3.5 - 8mm Varifocal
- IR Range: 80 ft.
- Video Output: 1.0 Vp-p 75 Ohms
- Min. Illumination: 0 Lux with IR On
- Shutter Speed: 1/50-1/12,000 sec. for NTSC
- Backlight Compensation: Auto
- White Balance: Auto
- Gamma Correction: > 0.45
- S/N Ratio: Over 50dB at AGC off
- Waterproof Rating: IP55
- Operating Temperatures: -4°F to 122°F
- Dimensions (mm): 12 Dia x 90 H
- Weight: 850g (1.9 lbs.)
- Power Supply: 12V DC 500mA

Model: MR420D
Resolution: 420 Lines

\$149⁰⁰

Model: MR540D
Resolution: 540 Lines

\$189⁰⁰

IR Varifocal Armor Dome Camera

Model: KCIAD550V

For top of the line 550 line 3 axis IR varifocal armor dome with and incredible 2.8-11mm lens, this one is for you. Also includes conduit side connection and installers video pigtail for quick focusing without disconnecting from video wire run.

- 1/3" Sony Super HAD CCD
- Auto Iris Lens
- 3-Axis
- 2.8 - 11mm zoom
- Vandal Resistant
- 22 IR LEDs

\$225⁰⁰

3 Axis

Specifications

- 1/3" Sony Super HAD HQ1 CCD
- Resolution: 550 Lines
- Pixels: 768 x 494
- IR Range: 50 feet
- S/N Ratio > 45dB
- Auto Iris Lens
- AGC
- Vandal Resistant
- Weatherproof Housing (IP66)
- Operating Temp: -10°C to 45°C
- Dimensions (mm): 145 W x 100 D
- Weight: 650g
- Power Supply: 12V DC/24 V AC 370mA



Model: KCBRK

High Res Outdoor Infrared Varifocal Dome Camera

Model: WD540IR

Great armored IR camera indoor or outdoor professional applications. Excellent picture quality is provided by the high resolution Sony Day / Night imaging chip. The 3-Axis wall mount bracket, 3 to 8mm varifocal lens, and easy dip switches for camera functions make it a dream to install and configure. DNR removes digital noise from the image, making it less grainy.

- Infrared to 50 ft.
- Indoor or Outdoor Use
- Vandal-resistant Dome
- Attractive 3-Axis Wall Bracket
- Digital Noise Reduction
- Easy DIP switch design for camera options
- Low Power Consumption



Specifications:

- 1/3" SONY Day / Night CCD
- Resolution: 540 Lines
- Min. Illumination: 0.01 Lux
- Lens: 3.5 - 8mm Varifocal
- BLC, AES, AGC, AWB (selectable)
- Horizontal Mirror option
- S/N Ratio > 48dB (AGC off)
- Operating Temp: 14°F to 122°F
- Dimensions: 5.2" Dia. x 5.9" H x 4.5" W
- Power Consumption: 100ma
- Power Supply: 12V DC (included)

\$149⁰⁰

Color 420 Line Motion Detector Camera

Model: MC420

A good quality 420 line resolution color camera is hidden in the motion detector housing.

Note: The motion detector is non-functional.

\$85⁰⁰



Specifications

1/4" Sharp CCD

Lens: 3.7mm

Resolution: 420 lines

Min. Illumination: 2.0Lux@F: 1.2

S/N Ratio >48dB

Operating Temp: 0°C to 50°C

Power Supply: 12V DC

Color 420 Line Fire Sprinkler Camera (Down view only)

Model: SC420DV

An excellent quality 420 line resolution color camera is hidden in the fire sprinkler housing.

Note: The fire sprinkler is non-functional.

\$99⁰⁰



Camera View

Specifications

1/3" SHARP CCD

Lens: 3.6mm

Resolution: 420 lines

Min. Illumination: 0.1 Lux@F1.2

Auto Gain control

Auto white balance

Ceiling or wall mount

S/N Ratio >48db

Dimension: 4.13" x 3.54"

Operation Temp.: 10°F to 113°F

Power Supply: 12V DC

CLPIN

Model: CLPIN

\$85⁰⁰

Specifications

1/4" Sharp CCD

Resolution: 420 Lines

Min. Illumination: 1.5 Lux@F2.1

S/N Ratio >48db

Operation Temp: -14°F to 122°F

Dimension (mm): 35 W x 35 D x 15 H

Power Supply: 12V DC



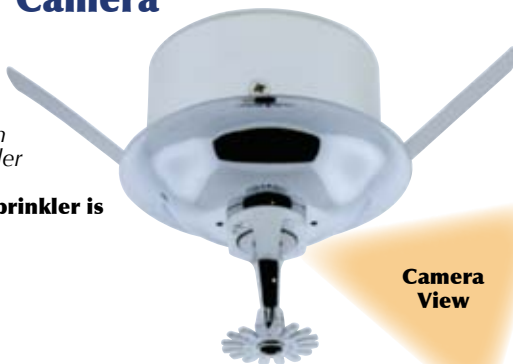
Color 420 Line Fire Sprinkler Camera

Model: SC420

A good quality 420 line resolution color camera is hidden in the fire sprinkler housing.

Note: The fire sprinkler is non-functional.

\$89⁰⁰



Camera View

Specifications

1/4" Sony CCD

Lens: 3.7mm Pinhole

Resolution: 420 Lines

Min. Illumination: 1.0Lux@F1.2

S/N Ratio > 48dB

White Balance: Auto

Gain Control: Auto

BLC: on

Operating Temp: -10°C to 45°C

Power Supply: 12V DC

Color 420 Line Side View Smoke Detector Camera

Model: SM420

A good quality 420 line resolution color camera hidden in the smoke detector housing. The side view camera is a huge improvement over the old bottom view smoke detectors - allowing an excellent view of the whole room. Just mount on the ceiling and adjust the camera to view the area you want.

Note: The smoke detector is non-functional.

\$85⁰⁰



Camera View

Specifications

1/4" Sharp CCD

Lens: 6mm

Resolution: 420 Lines

Min. Illumination: 1.0Lux@F1.2

S/N Ratio >48db

White Balance: Auto

Gain Control: Auto

BLC: on

Power Supply: 12V DC

Day/Night Speed Dome Camera

Model: 10XSPD

Product Includes: power supply, installation/instruction manual. Wall bracket is optional.

- 127 preset positions
- 8 programmable group tours
- Vandal Proof Dome
- Indoor / Outdoor
- Day / Night
- Small Footprint

\$469⁰⁰



Model: XSPDBRK
Optional Wall Mount

Coming Soon



Specifications

1/4" Samsung CCD
Lens: 3.8 - 38mm
Pixels : 768 x 494
Resolution: 500 Lines
SN Ratio: > 50db
Die-cast Anti-vandal Dome Cover
Interface: RS485 (Pelco-D)
Focus: Auto
0.05° to 360°/sec pan speed
White Balance: Auto/Manual
BLC: On/Off
Flickerless: On/Off
Auto Flip: On/Off
Zoom: 10X Optical Zoom, 10X Digital Zoom
Operating Temperature: 0°C to 40°C
Power Supply: 12V DC 750ma

Vandal Proof Mini Speed Dome Camera

Model: VPTZ

High quality mini speed dome. Half the size of a conventional speed dome. It can be mounted inside or outside and has an optional wall bracket. This unit will pan, tilt, or zoom up to 100X (total zoom: optical & digital). Great choice with an Optiview DVR.

\$599⁰⁰



Model: VPTZBRK
Optional Wall Mount

Call

Specifications

1/4" Super HAD SONY CCD
Lens: 3.8 - 38mm
Resolution: 500 Lines
SN Ratio: > 50db
Dome: Die-cast Anti-vandal Dome Cover
Focus: Auto; Iris: Auto
White Balance: Auto/Manual
BLC: On/Off
Flickerless: On/Off; Auto Flip: On/Off
Zoom: 10X Optical / 10X Digital
165 preset positions
Pan Angle: 360° continuous pan rotation
Pan Speed: 150°/sec manual, 200°/sec presets
Operating Temperature: 0°C - 50°C
Power Supply: 12V DC

Day/Night Constant Speed Dome Camera

Model: CSPD22X

Our constant speed dome is great for a tight budget. With 22x zoom and a great day night Sony CCD, you have everything the more expensive units have except for the fast pan / tilt speeds. Product Includes: wall bracket, heater / blower, power supply, installation / instruction manual.

\$455⁰⁰



Specifications

1/4" SONY CCD
Lens: 4 - 86mm, F1.6
Resolution: 480 Lines Color / 570 Lines B&W (night mode)
Min. Illumination: 0.5 Lux
SN Ratio: > 50db
Supports Pelco-D, Pelco-P
Focus : Auto/Manual
Iris : Auto/Manual
White BLC, Gain, AE Control : Auto/Manual
Zoom: 22X Optical Zoom
Pan Angle: 360° continuous pan rotation
Turn speed: 12°/sec (pan), 12°/sec (tilt)
Operating Temperature w/o heater: 0°C to 50°C
Power Supply: 12V DC

23X Autotracking Speed Dome PTZ Camera

Model: TRKPTZ

Intelligent auto tracking camera follows an object up to 360°. It zooms in and out up to 23X to keep object view at optimal size on the screen. When the object leaves the viewing area the camera can be set to return to predesignated "home" position.

- Auto tracking, intelligent surveillance
- Preset, auto cruise and pattern scan function
- Multi communication protocol compatibility, baud rate is changeable
- Iris, BLC, Focus and WB have auto and manual mode

\$1199⁰⁰



Specifications

1/4" Hitachi Day/Night Color CCD
Lens: 3.6 - 82.8mm
Resolution: 480 lines
Min. Illumination: 0.01Lux@ F1.2
S/N Ratio >50db
IR Cut Filter
AGC, BLC
Zoom: 23X Optical / 10X Digital
Pan: Continuous 0° to 360°; Tilt: 0° to 90°
Pan Speed: 0.05° to 400°/sec ; Tilt Speed: 0.03° to 240°/sec
Track Speed: 0° to 100°/sec
256 preset positions
Auto Cruise: Auto switch from 0 to 54 preset positions sequentially
Pattern Scan: P/T/Z scan from 55 to 63 preset positions automatically
Baud Rate: 1200bps; 2400bps; 4800bps; 9600bps; 19200bps
Power Supply: 24V AC

18X PTZ Camera

Model: 18XPTZIR

Our new cast aluminum IR PTZ camera has a 300 ft night viewing distance to allow night viewing in the darkest of nights.

- Preset, auto cruise and pattern scan function
- Multi communication protocol compatibility, baud rate is changeable
- Iris, BLC, Focus and WB have auto and manual mode

Specifications

1/4" Super HAD SONY CCD

Pixels : 768x494

Resolution: 480 Lines

SN Ratio: > 50db

OSD menu

Power Consumption: 45W

Aluminum Construction

Supports Pelco-d, Pelco-P

Interface : RS485 (Pelco-D)

Focus : Auto/Manual

Iris : Auto/Manual

White BLC, Gain, AE Control : Auto/Manual

Lens : 18X Optical Zoom, 4~86mm, F1.6

Digital Zoom: 10X (Total Zoom Ratio : 220x), 2x - 10x Variable

Presets: 127 preset positions

Pan Angle: 360° Continuous Pan Rotation

Pan Speed : manual 25°/S - 120°/S

preset 0.1°/S - 200°/S

Patterns: 8 pieces, 8 piece pattern

IP66

Operating Temperature without heater: 35°C to 60°C

Power Supply: 24V AC

Call

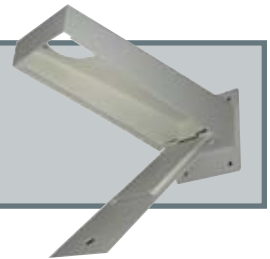
300 ft.
Night
Viewing



Model: PTZIRBRK

Optional wall bracket available

Call



Network IP Cameras

Economically priced network cameras that incorporate excellent image transmission with free recording software for a full IP camera monitoring solution. Product Includes: IP Camera, Wall bracket, Power Supply, Central Management System (CMS) software, Documentation, Technical Support

- Supported Protocols: DDNS, PPPoE, DHCP, NTP, SNTP, TCP/IP, ICMP, SMTP, FTP, HTTP, RTP, RTSP
- Low-latency video streaming for sharp and clear images
- Real Time Video Capture
- Remote Control
- Motion detection
- Indoor Use
- Ceiling or Wall Mount
- Multiple user access levels with password



Specifications:

Frame Rate: 30 fps

Video Compression: MPEG4 / MJPEG

Image Sensor: 1/3.6" image sensor

Pixels: 738(H) x 480(V)

Lens: 3.6mm f2.0

Shutter Speed: 1/60 to 1/100,000 sec.

Min Illumination: 1.0 Lux

BLC: Auto

White Balance: ATW

Operating Temperature: 0°C to 40°C (32°F to 104°F)

Power: DC12V, 0.5A

Model: IP101

\$139⁰⁰

Model: IP102

Audio monitoring
IR LED lighting

\$169⁰⁰

Day/Night Speed Dome Camera

Model: 22XSPD

Our exclusive Optiview speed dome cameras allow you to pan, tilt, or zoom up to 220X. Crystal clear image day or night, and a full OSD allows access to all functions. It will be hard to beat at this price!

- 127 preset positions
- Patterns: 8 pieces, 20 pieces motion every group



\$649⁰⁰

180°/sec

Specifications

1/4" Super HAD SONY CCD
 Lens: 4-86mm, f 1.6
 Resolution: 480 Lines Color / 570 Lines B&W (night mode)
 Pixels : 768 x 494
 SN Ratio: > 50db
 Aluminum Construction
 Focus: Auto/Manual Iris : Auto/Manual
 White BLC, Gain, AE Control : Auto/Manual
 Zoom: 22X Optical, 10X Digital Zoom
 Supports Pelco-d, Pelco-P
 Pan Speed : manual 0.1° to 180°/sec preset 0.1° to 400° /sec
 Tilt Speed : 15° to 60°/sec
 Operating Temp. w/o heater: 0°C to 50°C
 Operating Temp. w/heater / blower: -50°C to 60°C
 Power Supply: 24V AC

Day/Night Speed Dome Camera

Model: 30XSPD

Our exclusive Optiview speed dome cameras allow you to pan, tilt, or zoom up to 330X. Crystal clear image day or night, and a full OSD allowing access to all functions. It will be hard to beat at this price!

- 127 preset positions
- Patterns: 8 pieces, 20 pieces motion every group



\$749⁰⁰

180°/sec

Specifications

1/4" Super HAD SONY CCD
 Lens: 4 - 99mm, f 1.6
 Resolution: 480 Lines Color / 570 Lines B&W (night mode)
 Pixels : 768 x 494
 SN Ratio: > 50db
 Aluminum Construction
 Focus: Auto/Manual Iris : Auto/Manual
 White BLC, Gain, AE Control : Auto/Manual
 Zoom: 30X Optical, 10X Digital Zoom
 Supports Pelco-d, Pelco-P
 Pan Speed : manual 0.1° to 180°/sec preset 0.1° to 400° /sec
 Tilt Speed : 15° to 60°/sec
 Operating Temp. w/o heater: 0°C to 50°C
 Operating Temp. w/heater / blower: -50°C to 60°C
 Power Supply: 24V AC

Indoor Speed Dome Camera

Model: 22XSPDIN

Our exclusive Optiview speed dome cameras allow you to pan, tilt, or zoom up to 220X. Crystal clear image day or night, and a full OSD allows access to all functions. It will be hard to beat at this price!

- 127 preset positions
- Patterns: 8 pieces, 20 pieces motion every group



\$599⁰⁰

180°/sec

Specifications

1/4" Super HAD SONY CCD
 Lens: 4-86mm, f 1.6
 Resolution: 480 Lines Color / 570 Lines B&W (night mode)
 Pixels : 768 x 494
 SN Ratio: > 50db
 Aluminum Construction
 Focus: Auto/Manual Iris : Auto/Manual
 White BLC, Gain, AE Control : Auto/Manual
 Zoom: 22X Optical, 10X Digital Zoom
 Supports Pelco-d, Pelco-P
 Pan Speed : manual 0.1° to 180°/sec preset 0.1° to 400° /sec
 Tilt Speed : 15° to 60°/sec
 Operating Temp. w/o heater: 0°C to 50°C
 Operating Temp. w/heater / blower: -50°C to 60°C
 Power Supply: 24V AC

Recessed Ceiling Mount

Model: SPDINCAN

22/30XSPDIN recessed ceiling mount can, allows installation of interior speed dome flush with ceiling.



CALL

Indoor Speed Dome Camera

Model: 30XSPDIN

Our exclusive Optiview speed dome cameras allow you to pan, tilt, or zoom up to 330X. Crystal clear image day or night, and a full OSD allowing access to all functions. It will be hard to beat at this price!

- 127 preset positions
- Patterns: 8 pieces, 20 pieces motion every group



\$699⁰⁰

180°/sec

Specifications

1/4" Super HAD SONY CCD
 Lens: 4 - 99mm, f 1.6
 Resolution: 480 Lines Color / 570 Lines B&W (night mode)
 Pixels : 768 x 494
 SN Ratio: > 50db
 Aluminum Construction
 Focus: Auto/Manual Iris : Auto/Manual
 White BLC, Gain, AE Control : Auto/Manual
 Zoom: 30X Optical, 10X Digital Zoom
 Supports Pelco-d, Pelco-P
 Pan Speed : manual 0.1° to 180°/sec preset 0.1° to 400° /sec
 Tilt Speed : 15° to 60°/sec
 Operating Temp. w/o heater: 0°C to 50°C
 Operating Temp. w/heater / blower: -50°C to 60°C
 Power Supply: 24V AC

XPENDANT

24" Pendant mount for
22XSPD or 30XSPD

\$89⁰⁰

**XPOLE**

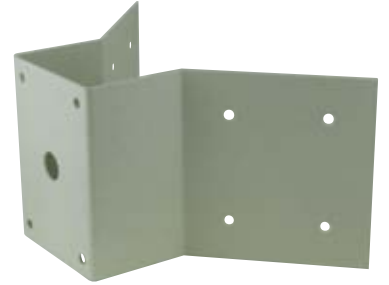
Adjustable pole mount for
22XSPD or 30XSPD

\$89⁰⁰

**XCORNER**

Outdoor corner mount
for 22XSPD or 30XSPD

\$89⁰⁰

**3D PTZ Joystick Controller****Model: 3DKEY**

This professional PTZ Controller is functional and ergonomic. It will work with all speed domes offered at Optiview and most others (see detailed specs below).

- Three axis joystick - control pan, tilt and zoom
- Alpha-Numeric LCD Display
- Easy to operate and ergonomic
- Supports all common protocols and baud rates
- Controls up to 32 PTZ cameras
- Power Supply included

Specifications:

Communication: RS-485, Max 1200 Meters

Display: Alpha-numeric Backlit LCD Display

Selectable Baud Rates: 2400, 4800, 9600 and 19200

Integrated Protocols: Pelco D, Pelco P, Samsung, Neon, Panasonic, Kalatel, Ultrak, Lilin and Hunda600

Power Consumption: 5W

Dimensions: 218mm (W) x 180mm (D) x 56mm (H)

Weight: Approx. 1.3Kg (3 lbs)

Humidity: 90% Max

Operating Temp.: 0°C to 50°C (32°F to 122°F)

Power Supply: 12V DC (power supply included)



\$249⁰⁰

PTZ Joystick Controller**Model: JOYSTICK**

Dependable joystick compatible with all PTZ protocols

- Steel frame design
- Setting up ID address from 0 to 255 for speed dome camera or receiver
- Control pan/tilt, focus, zoom, iris and other parameter setup
- LCD menu, easy to operate
- Camera Setup: camera address, presets, auto tour, auto scan, etc.
- Remote Control: wire distances up to 1200m (RS485)
- To control up to 32 preset dome camera
- Power Supply included

\$209⁰⁰



4 Camera JPEG 120fps Triplex Embedded DVR with USB Backup

Model: DVRJ4B

This unit allows full 4 channel realtime record / playback with the same easy mouse control the expensive dvr's use at the lowest prices possible.

- Real time recording and CIF resolution
- Triplex operation
- M-JPEG compression
- 4 ch video and 4 ch audio inputs
- Support PS2 mouse, remote control and panel control
- USB Backup and upgrade

\$369⁰⁰



Specifications

Camera Inputs: 4

Image Compression: Modified JPEG

3 channel output BNC,S-video,VGA

Recording Rate: 120 fps

Recording Resolution: CIF:352x288 (CIF)

Record Modes: Manual, Alarm, Motion detection, scheduled

Video Search: Search by event, time and channel

Playback: 1channel or 4channel

4 channel audio input and 1 channel output

4 channel alarm inputs and 1 channel output

Supports up to 1T HDD

Triplex operation, support PS2 mouse control ,remote control

USB back up and USB upgrade

Weight, 2KG

Dimensions: 300mm(L) x 272mm(W) x 58mm(H)

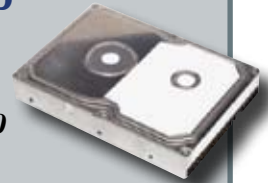
Additional HDD

Model: HD500

\$149⁰⁰

Model: HD1000

\$199⁰⁰



Mini H.264 DVR

Our most cost effective series offer the most feature to cost ratio, with all the most desirable features including real-time recording and playback, H.264 compression, triplex operation (can view, record, and playback all at the same time), PTZ support, and remote viewing capability.

- 4 Channel Input
- Triplex (Recording, Playback, Network all at the same time)
- H.264 Compression
- Remote Viewing
- Real Time Display
- 120fps (30 fps or channel)
- IE Web Server and Remote Client
- PTZ Control via RS-485 (Pelco D, Pelco P)
- Automatic Camera Detection
- Supports Covert Camera Operation
- IR Remote Control Included
- Full mouse control

Specifications:

Image Compression: H.264

Operating System: Embedded Linux

Operation: Triplex(Playback / Record / Network View)

Video Input: BNC x 4, 1.0Vp-p, 75 ohm

Video Output: BNC to main monitor

Video Output: VGA 800 x 600, 1024 x 768, 1280 x 1024 pixels

Hard Drive: 1 HD Maximum (up to 1 Terabyte)

Display: 30 fps per channel (@720 x 480)

Recording Rate: 120 fps (@360 x 240), 60 fps (@720 x 480), 30 fps (@720 x 480)

Recording Qualities: 8 Preset Levels

Recording: Schedule, Alarm, Motion Detection

Search: Time, Date, Event

Playback Speeds: 1X, 2X, ...32X

Alarm Inputs: 8 D-Sub

Alarm Outputs: 1 relay output D-Sub

Pre-Alarm operation: Yes

PTZ Control: RS-485 interface

Archiving: USB 2.0, network

Network: Ethernet RJ-45 connector, 10/100 mbps, supports DHCP

Remote Operation: Monitor, Playback, Recording, System Setup, Archiving

Password Control: 2 Level, Administrator / User

Operation Temperature: -5°C to 40°C (23°F to 104°F)

Relative Humidity: 10% - 90% Non - condensing

Model:DVRMINIH4

- Camera Inputs: 4
- Audio Inputs: 4
- Audio Outputs: 1
- 120 FP

\$569⁰⁰



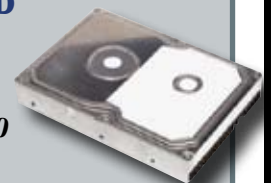
Additional HDD

Model: HD500

\$149⁰⁰

Model: HD1000

\$199⁰⁰



Hard Drive Included

Toll Free **866-301-7680**

Mini H.264 DVR

Our most cost effective series offer the most feature to cost ratio, with all the most desirable features including H.264 compression, triplex operation (can view, record, and playback all at the same time), PTZ support, and remote viewing capability.

- 8/16 Channel Input
- Triplex (Recording, Playback, Network all at the same time)
- H.264 Compression
- Remote Viewing
- Real Time Display
- 240fps (8, 16 channel) Recording Speed
- Archiving via simple "1-touch" USB operation
- Stable Operation System (Embedded Linux)
- Firmware Upgradeable
- Scheduled Recording
- Password Protection
- IE Web Server and Remote Client
- PTZ Control via RS-485 (Pelco D, Pelco P)
- Automatic Camera Detection
- Supports Covert Camera Operation
- Supports Pre-Alarm Recording
- IR Remote Control Included
- Full mouse control



Specifications:

Image Compression: H.264

Operating System: Embedded Linux

Operation: Triplex(Playback / Record / Network View)

Video Input: BNC x 8/16, 1.0Vp-p, 75 ohm

Video Output: BNC to main monitor

Video Output: VGA 800 x 600, 1024 x 768, 1280 x 1024 pixels

Hard Drive: 2 HD Maximum (up to 2 Terabyte)

Display: 30 fps per channel (@720 x 480)

Recording Rate: 240 fps (@360 x 240), 120 fps (@720 x 240), 60 fps (@720 x 480)

Recording Qualities: 8 Preset Levels

Recording: Schedule, Alarm, Motion Detection

Search: Time, Date, Event

Playback Speeds: 1X, 2X, ...32X

Alarm Inputs: 8 D-Sub

Alarm Outputs: 1 relay output D-Sub

Pre-Alarm operation: Yes

PTZ Control: RS-485 interface

Archiving: USB 2.0, network

Network: Ethernet RJ-45 connector, 10/100 mbps, supports DHCP

Remote Operation: Monitor, Playback, Recording, System Setup, Archiving

Password Control: 2 Level, Administrator / User

Operation Temperature: -5°C to 40°C (23°F to 104°F)

Relative Humidity: 10% - 90% Non - condensing



Model: DVRMINIH8

Camera Inputs: 8

Audio Inputs: 8

Audio Outputs: 2

240 FPS

\$899⁰⁰



Model: DVRMINIH16

Camera Inputs: 16

Audio Inputs: 16

Audio Outputs: 2

240 FPS

CALL

Additional HDD

Model: HD500

\$149⁰⁰

Model: HD1000

\$199⁰⁰



Hybrid H.264 DVR

Our most cost effective series offer the most feature to cost ratio, with all the most desirable features including H.264 compression, triplex operation (can view, record, and playback all at the same time), PTZ support, and remote viewing capability.

- 4/8/16 Channel Input
- Triplex (Recording, Playback, Network all at the same time)
- H.264 Compression
- Remote Viewing
- Real Time Display
- Archiving via USB and DVD-RW
- 120fps (4 channel) 240fps (8, 16 channel) Recording Speed
- Archiving via simple "1-touch" USB operation
- Stable Operation System (Embedded Linux)
- Firmware Upgradeable
- Scheduled Recording
- Password Protection
- IE Web Server and Remote Client
- PTZ Control via RS-485 (Pelco D, Pelco P)
- Automatic Camera Detection
- Supports Covert Camera Operation
- Supports Pre-Alarm Recording
- IR Remote Control Included

Live View



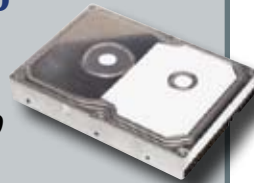
Playback



Additional HDD

Model: HD500
\$149⁰⁰

Model: HD1000
\$199⁰⁰



Specifications

- Image Compression: H.264
- Embedded Linux Operating System
- Triplex (Playback / Record / Network View)
- Digital Zoom 2 X 2
- Video Input: BNC x 4, 1.0Vp-p, 75 ohm BNC x 8, 1.0Vp-p, 75 ohm BNC x 16, 1.0Vp-p, 75 ohm
- Video Output: BNC to main monitor
- Video Output: VGA 800 x 600, 1024 x 768, 1280 x 1024 pixels
- Audio Input: 4/8/16 inputs
- Audio Output: 2 output
- Display: 30 fps per channel (@720 x 480 Real Time)
- Maximum Recording Rate: 120 (4 channel), 240 (8-16 channel)
- Recording Qualities: Best Quality, Standard, ezRecord, Extended Record, DSL
- Recording: Schedule, Alarm, Motion Detection
- Search: Time, Date, Event
- Playback Speeds: 1X, 2X, 32X
- Alarm Inputs: 4 dry contacts, NC/NO programmable
- Alarm Outputs: 1 relay output (Form C) (Rating : 5A/30 VDC)
- 30 Images Pre-alarm operation
- PTZ Control: RS-485 interface
- Hard Drive: 2 HD Maximum (up to 2 Terabytes)
- Archiving: USB 2.0, DVD-RW, network
- Network: Ethernet RJ-45 connector, 10/100Mbps, supports DHCP
- Remote Operation: Monitor, Playback, System Setup, Dome Camera Control
- Password Control: 2 level, Administrator/User
- General Unit Dimensions (mm): 362 W x 350 D x 90 H
- Unit Weight: 7 kgs (15.4 lbs)
- Operation Temperature: -5°C to 40°C (23°F to 104°F)
- Relative Humidity: 10% - 90% Non-condensing
- Supports 2 internal SATA HDDs
- Dual-Codec for H.264 / MJPEG recording
- Mouse Control (GUI)

Hard Drive Included

- Model: DVRH4**
Camera Inputs: 4 Channels
- 4 Audio Inputs
 - Hybrid H.264
 - DVD-RW
 - 120 fps
 - Remote connect

\$789⁰⁰



- Model: DVRH8**
Camera Inputs: 8 Channels
- 8 Audio Inputs
 - Hybrid H.264
 - DVD-RW
 - 240 fps
 - Remote connect

\$999⁰⁰



- Model: DVRH16**
Camera Inputs: 16 Channels
- 16 Audio Inputs
 - Hybrid H.264
 - DVD-RW
 - 240 fps
 - Remote connect

CALL



1.3 Megapixel IP Camera For This DVR

Shown with optional lens.



Call For More Info

Model: ND13CCD
Coming Soon

Toll Free 866-301-7680

Premium Hybrid H.264

- Hybrid IP Megapixel input
- H.264 / MPEG4 Compression
- Real time recording
- Pentaplex
- Full mouse control (GUI)
- POS function
- Pelco Coaxitron protocol

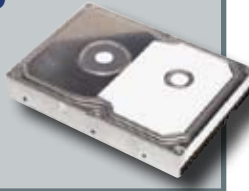
Additional HDD

Model: HD500

\$149⁰⁰

Model: HD1000

\$199⁰⁰



Specifications

Performance: Pentaplex

Channel : 8/16 ch(BNC)

Loop-Out: 8/16 ch(BNC)

Video Out: Main Display (VGA, BNC, S-Video)

Call Monitor: 1 BNC

VGA Resolution: 800 x 600, 1024 x 768, 1280 x 1024 pixels

Audio: 8/16 audio inputs (screw terminal)

Display Speed: 240/480 fps

Recording Speed: 240fps H.264 / 480fps MPEG4

Interface: Graphic User Interface

Channel: Per channel config

Video: H.264 / MPEG 4 Codec compression (selectable)

Recording Type: Continuous/ Motion/ Alarm

Storage: SATA Capacity Up to 3 HDD

Backup: USB Memory Stick or DVDRW

Playback: Screen Split - 1, 4, 8 or 16

Alarm In: Input 8/16

Alarm Out: Output 2/3

PTZ: Pelco-D, Pelco-P

File Format: Backup - AVI, JPG, BMP

Mobile Phone: mobile view software

POS function: Transaction monitoring

Feature: Pelco Coaxitron protocol

NTP: Network time sync

IP Cam Inputs: 4/8

IP Cameras: Supports MEGAPIXEL ACTi, AXIS, HUNT, SANYO, SONY, VIVOTECK, OPTIVIEW

Network: RJ45, Ethernet Protocol TCP/IP(Dynamic IP Support), DHCP, DDNS

Browser: Remote S/W provided, Web Browser (Internet Explorer)

Control Device: Remote controller/ USB mouse / USB Keyboard

Dimension (mm): 440 x 90 x 413

Weight: 7.0kg

MODEL: DVRHR8

- Hybrid IP camera input
- H.264 / MPEG4 Compression
- Real time recording
- 240 - H.264 / 240 - MPEG4 Recording
- Pentaplex
- Full mouse control (GUI)

CALL

MODEL: DVRHR16

- Hybrid IP camera input
- H.264 / MPEG4 Compression
- Real time recording
- 240 - H.264 / 480 - MPEG4 Recording
- Pentaplex
- Full mouse control (GUI)

CALL

1.3 Megapixel IP Camera For This DVR

Shown with optional lens.



Call For More Info

Model: ND13CCD

Coming Soon

Hard Drive Included

Pentaplex Embedded DVR

- Real time recording
- 240/480 recording
- Pentaplex
- Full timebar playback (like PC based DVR)
- MPEG4 Compression
- FULL D1 resolution supported
- Full mouse control (GUI)
- 4 Spot matrix monitor out
- Different resolution / schedule set up per camera
- Multi DVR access via CMS



Specifications

- Channel:** 8/16 ch(BNC)
- Loop-Out:** 8/16 ch(BNC)
- Video Out:** Main Display 1 VGA
- Spot out:** 4 Ch Analog(BNC) , 1 S-Video
- Audio:** Input / Output 4 Line in / 1 Line out, RCA socket, Two-way Audio
- Display Speed:** 240/480 fps
- Record Speed:** 240/480 fps
- Functions:** Intelligent & Scheduled:
Daily, Weekly adjust specific Hr for each channel
- Interface:** Graphic User Interface
- Video:** MPEG 4 Codec compression
- Recording type:** Continuous/ Motion/ Alarm
- Storage:** SATA Capacity Up to 3 HDD (Not Capacity limited)
- Backup:** USB Default (USB Memory Stick, USB HDD, DVD)
- Playback:** Screen Split 1, 4, 8 or 16
- Speed:** x1, x2, x3, x4, x8, x16, x32, x64, x128
- File format:** Backup - AVI, JPG, BMP
- USB port:** USB 2.0(Front:2, Rear:1)
- PTZ:** RS-485 Interface
- Network:** RJ45, Ethernet Protocol TCP/IP(Dynamic IP Support), DHCP, DDNS
- Browser:** Remote S/W provided, Web Browser (Internet Explorer)
- Control Device:** Keypad / Remote controller/ USB mouse / USB Keyboard
- Dimension (mm):** 430 W x 87 D x 460 H
- Weight:** 9.0kg

Model: DVRMXR8

- 8 Channel realtime
- Timebar playback
- Mouse GUI
- 4 Spot matrix out
- Schedule/res/speed per cam

CALL

Model: DVRMXR16

- 16 Channel realtime
- Timebar playback
- Mouse GUI
- 4 Spot matrix out
- Schedule/res/speed per cam

CALL

Additional HDD

Model: HD500
\$149⁰⁰

Model: HD1000
\$199⁰⁰



Hard Drive Included

Toll Free **866-301-7680**

Pentaplex H.264 DVR with DVD-RW Backup

This top of the line high resolution Optiview VR series DVR offers the best playback image quality at a competitive price. We have adopted the latest H.264 technology to allow full screen playback pictures with clear smooth real time viewing. You cannot find a better image or more options than the Optiview VR series product line. We also include a remote client that not only allows control of DVR server but also acts as a full feature DVR allowing streaming remote recording of all cameras from your DVR, Optiview IP servers, or new Optiview IP cameras.

- Real time audio for every channel
- Real time viewing and recording at full screen
- Smart search feature allows skipping over motionless areas
- Up to 16 channel simultaneous playback
- Less than .1 seconds delay in display
- Audio synced with video perfectly
- Recording options are scheduled, motion or 24hrs
- H.264 compression technology
- Watermarking
- Pentaplex recording, playback and remote connection all at the same time
- Supports many PTZ protocols
- Remote connection via IE or client
- Client allows control of settings on server also allows full recording and playback on remote machine
- Network speed auto adjusts for smoothest picture



Live View

Playback



Hybrid
Solution!
Up To
32
IP Cameras



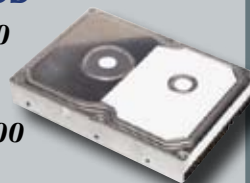
Specifications

O/S: Windows XP Professional
System CPU: Pentium 4 Dual Core
Memory: 1Gig DDR
Playback: Full or multiscreen (R/T)
Compression: H.264 Real-time
Resolution: 704 x 480
Image Size: DCIF 528 x 320 or CIF 352 x 240
Audio: Real Time audio on every channel
Hard Drive: 500 GB (Upgradable to 6 Terabytes)
Backup: DVD-RW

Additional HDD

Model: HD500
\$149⁰⁰

Model: HD1000
\$199⁰⁰



Model: VR400

Camera/Audio Input: 4 channels
Recoding Speed: 120 fps total
\$1299⁰⁰ (30 fps each camera)

Model: VR800

Camera/Audio Input: 8 channels
Recoding Speed: 240 fps total
\$1659⁰⁰ (30 fps each camera)

Model: VR1200

Camera/Audio Input: 12 channels
Recoding Speed: 360 fps total
\$1999⁰⁰ (30 fps each camera)

Model: VR1600

Camera/Audio Input: 16 channels
Recoding Speed: 480 fps total
\$2299⁰⁰ (30 fps each camera)

Model: VR2400

Camera/Audio Input: 24 channels
Recoding Speed: 720 fps total
\$2799⁰⁰ (30 fps each camera)

Model: VR3200

Camera/Audio Input: 32 channels
Recoding Speed: 960 fps total
\$3199⁰⁰ (30 fps each camera)

Model: VR4800

Camera/Audio Input: 48 channels
Recoding Speed: 1440 fps total
\$3995⁰⁰ (30 fps each camera)

Model: VR6400

Camera/Audio Input: 64 channels
Recoding Speed: 1920 fps total
\$4699⁰⁰ (30 fps each camera)

VRMATRIX

Allows 2 to 4
monitors to display
selected images.



VRMATRIX2

VRMATRIX4

Call

Call

Hi Res IP Camera

Model: IPCAM

High resolution H.264 IP camera with 16 channel virtual Optiview client DVR.

- C/CS mount
- Power draw 4W MAX
- Video compression H.264
- Transmission 32K-2M, adjustable (8Mbps maximum)
- Resolution NTSC: 704x480, 528x320, 704x240, 352x240, 176x120
- 30fps @ 704x480
- Protocols TCP/IP, HTTP, RTP, RTCP, ARP, ICMP, PPPOE, DHCP, FTP, UDP, DNS, DDNS, SMTP, NTP, Static IP

Specifications

1/3" SONY Super HAD CCD

Pixels 768 x 494

Resolution: 480 lines

Min. Illumination: 0.1Lux @ F1.2

Auto Iris, DC/VIDEO

S/N Ratio>48dB

Operating temp 10°C to 60°C

Power Supply: 12V DC

\$349⁰⁰



Infrared IP Camera

Model: IRIPCAM

- Backlight Compensation
- RJ45 10M/100M
- Power draw 800mA
- 32kbps--2Mbps (Self defined)
- Video compression H.264
- Compress resolution 4CIF/DCIF/2CIF/CIF/QCIF

Specifications

1/3" SONY Super HAD CCD

540 Lines

Pixels 768 x 494

IR range 75ft

S/N Ratio> 50dB

Lens: 6mm

36 IR LED

Frame rate 1/16 to 30 fps

Power Supply: 12V DC



\$339⁰⁰

Wireless IP Camera

Model: WIPCAM

Wireless High resolution H.264 IP camera with 16 channel virtual Optiview client DVR.

- C/CS mount
- Wireless criterion IEEE 802.11g
- Power draw 4W MAX
- Video compression H.264
- Transmission 32K-2M, adjustable (8Mbps maximum)
- Resolution NTSC: 704x480, 528x320, 704x240, 352x240, 176x120
- 30fps @ 704x480
- Protocols TCP/IP, HTTP, RTP, RTCP, ARP, ICMP, PPPOE, DHCP, FTP, UDP, DNS, DDNS, SMTP, NTP, Static IP

Specifications

1/3" SONY Super HAD CCD

Pixels 768 x 494

Resolution: 480 lines

Min. Illumination: 0.1Lux @ F1.2

Auto Iris, DC/VIDEO

S/N Ratio>48dB

Operating temp 10°C to 60°C

Power Supply: 12V DC

\$399⁰⁰



Pentaplex H.264 DVR

The perfect complement to go with products on this page



See page 21 for specs

IP Servers

Optiview's newest IP server allows real time streaming video via high speed network from camera to our enterprise VR series network server client allowing onsite recording and playback. Or you may view it via IE from any network connection.

- Embedded OS
- Embedded MCU
- High performance DSP hardware compression
- H.264 video compression algorithm and each channel can be real time 30FPS
- Motion detection
- Configurable OSD & LOGO
- Variable bit rate or variable frame rate
- Dual-stream and the sub stream can support CIF/QCIF compression resolution
- TCP, UTP, RTP, Multicast, DHCP, etc
- Remote parameters setup
- Remote upgradeable firmware
- Remote control PTZ
- Supports Internet Explore viewing
- Remote alarm information
- Max support 4CIF compression resolution real time

Model: VS1

1 Channel Network Video Server

Video: 1 input

Audio: 1 input

PTZ Control: 1 output

\$299⁰⁰



Model: VS4

4 Channel Network Video Server

Video: 4 input

Audio: 4 input

PTZ Control: 1 output

\$429⁰⁰



Specifications

TV System: NTSC

Dimensions: 198mm X 123mm X 39mm

Resolution: 704 X 480(4CIF)

DCIF: 528 X 320

2CIF: 704 X 240

CIF: 352 X 240

QCIF: 176 X 120

Toll Free **866-301-7680**

Complete Long Range Wireless Video Transmission System!

Long range 1 or 4 channel wireless analog video transmitter. This long range transmitter package consists of a outdoor weather proof housing enclosure housing a 9 channel-10amp power supply for your cameras power. It also houses a H.264 realtime 1 or 4 channel video server with a "easy connect" wireless bridge that can be mounted anywhere near the control box for easy line of sight transmitting range.

- Optiview full feature DVR software
- Compatible with Optiview VR series DVRs
- 54 mbps
- 9 channel, 10amp camera power
- H.264 video transmission
- Weather proof housing
- Thermostatic cooling fan
- 1 or 4 channel video server
- 110v outlet for added devices
- 1000 ft line of sight transmission range
- Add 15db directional antenna for up to .5 mile range
- Add additional "relay" bridge to extend total

IP Servers

Optiview's newest IP server allows real time streaming video via high speed network from camera to our enterprise VR series network server client allowing onsite recording and playback. Or you may view it via IE from any network connection.

- Embedded OS
- Embedded MCU
- High performance DSP hardware compression
- H.264 video compression algorithm and each channel can be real time 30FPS
- Motion detection
- Configurable OSD & LOGO
- Variable bit rate or variable frame rate
- Dual-stream and the sub stream can support CIF/QCIF compression resolution
- TCP, UTP, RTP, Multicast, DHCP, etc
- Remote parameters setup
- Remote upgradeable firmware
- Remote control PTZ
- Supports Internet Explore viewing
- Remote alarm information
- Max support 4CIF compression resolution real time

Model: WIP1

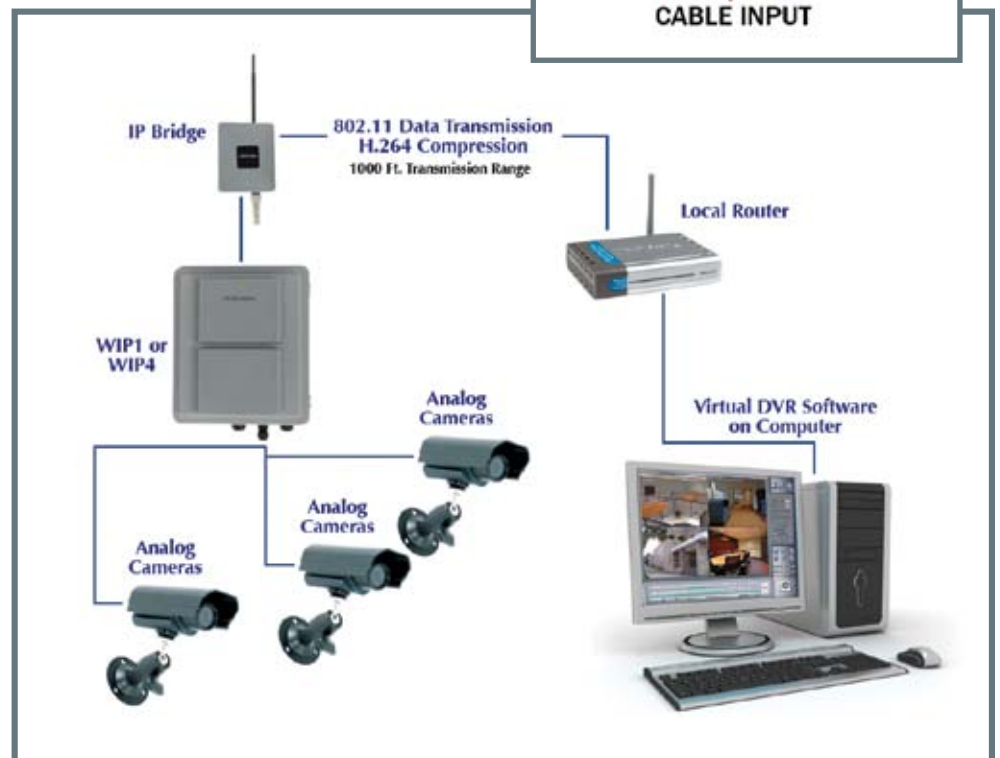
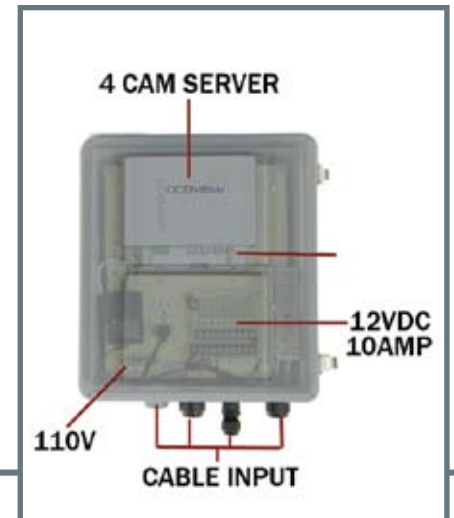
1 channel transmitter

Call

Model: WIP4

4 channel transmitter

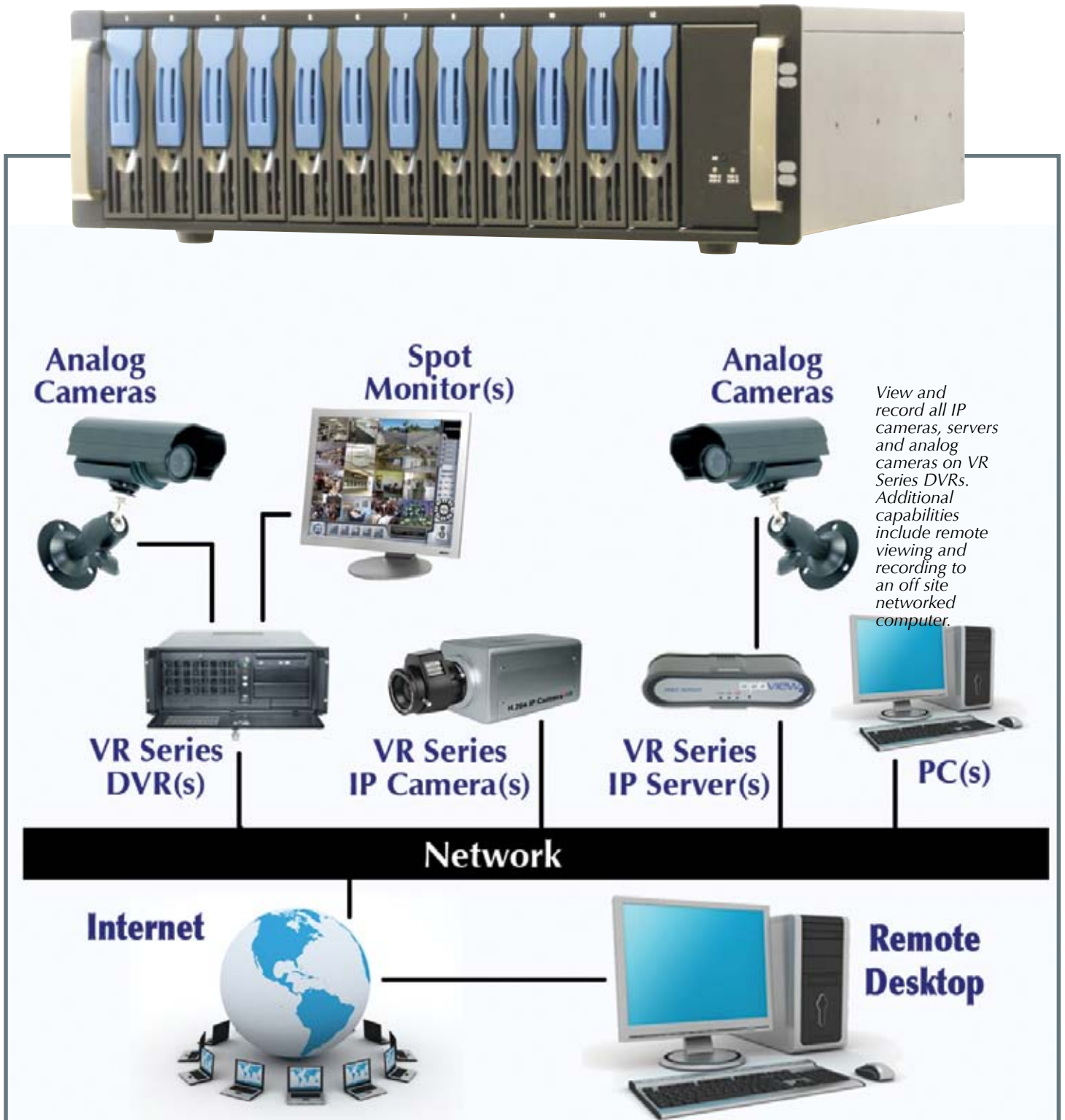
Call



TeraServer

By adding our exclusive OPTIVIEW tera-server to your DVR, you can increase your storage capacity up to 12 terabytes more than your current DVR allows! Call an OPTIVIEW representative for more details

Call For Pricing



Toll Free 866-301-7680

CAT5-BNC Micro Converter

Model: VB1M

Converts BNC connection to CAT5, then CAT5 back to BNC. (Sold In Pairs Only)

\$15⁰⁰



CAT5-BNC Converter

Model: VB4

Converts 4 BNC connections to CAT5, then CAT5 back to BNC. (Sold In Pairs Only)

\$89⁰⁰



CAT5 Cable

This CAT5 cable with connectors is a great way to save time on short runs when using RJ-45 terminated devices or IP cameras.



Model: CAT25

25' CAT5 cable with connectors

Model: CAT50

50' CAT5 cable with connectors

Model: CAT100

100' CAT5 cable with connectors

CAT5-BNC Converter

MPBALUN

Will run 1 video, 1 power, and 1 data (for example, audio or PTZ control) signal over CAT5 up to 1000 feet by converting BNC to 1 twisted pair then back to BNC. (This product is sold in pairs and cannot be purchased individually. Cat5 cable and power supply not included.)



\$34⁰⁰

Portable 2.5" LCD Monitor

Model: PTZMON

Video in / out

Controls PTZ zoom, focus, setup

Supports presets

Pelco-d, Pelco-p, Samsung, Liling

Baud Rate 2400, 4800, 9600, 19200bps

RS232/485

156mm x93mmx51mm

350g

Includes - battery charger



Coming Soon

BNC To BNC Connector Cable Assembly

Model: BNC4

3' long, 4 conductor BNC male to BNC male connector cable assembly.



16 Channel Passive Transceiver

Model: VB16

This rack mount unit allows a clean installation of your UTP video balun inputs to a DVR or multiple video monitors. Converts BNC connection to CAT5, then CAT5 back to BNC.



Endline Microphone

Model: MIC2

- Output is line level
- Runs on 6-15 volts DC, 20mA
- Comes with 6 foot power/audio cables



\$26⁰⁰

Inline Microphone

Model: MIC

- 12v dc inline microphone
- Allows use of the 12v dc power for your security camera
- Requires 2 conductor audio cable (or plug and play cable)



\$26⁰⁰

2.1mm Pigtail Connector

Model: PWRADT-0

Allows RG59 power cable to be terminated into a 2.1mm camera connector.



2.1mm Power Connector Adapter

Model: PWR21



2.1mm Pigtail Connector

Model: PWRADT

Allows RG59 power cable to be terminated into a 2.1mm camera connector.



\$1⁰⁰

USB KVM Switch

Model: KVMU

The simplest way to simultaneously run and share audio among two computers (DVRS) with a single USB keyboard, monitor and USB mouse. This self-powered KVM switch features the unique USB sniffing technology for USB mouse and keyboard emulation to ensure smooth operation, as well as support for Plug-n-Play monitors and most wheel mice.



Lockbox

Model: LOCKBOX

- Size 21" X 21" x 8"
- 16 gauge steel
- Cooling fan
- Removable locking lid
- Textured powdercoat finish
- Includes 2 keys



\$149⁰⁰

Twist-On BNC Adapter**Model: TWIST**

Twist on to BNC male connector. For use with RG59 cable.

**\$0.95****2-Piece RG59 Connector****Model: CRIMP**

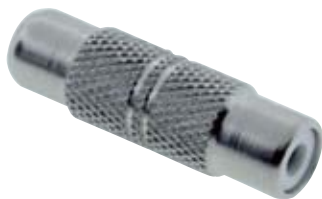
2 piece crimp connector.

**\$0.95****RG59 Compression Connector****Model: COMBNC**

Quick and easy. Use with compression tool.

**\$1.25****RCA-RCA****Model: RCARCA**

RCA to RCA barrel connector.

**\$0.95****BNC-BNC****Model: BNCBNC**

BNC to BNC barrel connector.

**\$0.95****BNCT****Model: BNCT**

BNC "T" connector.

**\$0.95****RCA-BNC Adapter****Model: RCABNC**

RCA (male) to BNC (female) connector.

**\$0.95****BNC-RCA Adapter****Model: BNCRCA**

BNC (male) to RCA (female) connector. For use with RCA cable.

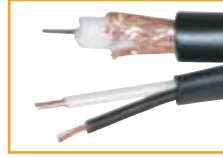
**\$0.95****RS485 Converter****Model: RS485**

Converts PTZ signals to PC-Based VR Series.

**\$40⁰⁰**

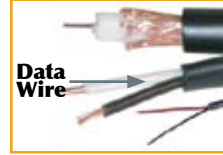
CCTV Cable w/Power

This cable can be used with almost all cameras. It is a special video cable with power wires for the camera in the same jacket.



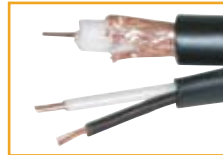
Model: CAB500
500' length

\$119⁰⁰



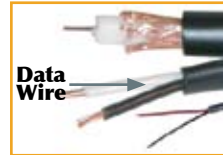
Model: CAB500D
500' length with data. Use data wire for audio or PTZ cameras

\$169⁰⁰



Model: CAB1000
1000' length

\$209⁰⁰



Model: CAB1000D
1000' length with data. Use data wire for audio or PTZ cameras

Coming Soon

RCA Plug and Play CCTV Cable

This cable will work with any camera. It has RCA connectors for video and a power cable all in one. The best part about it is it's size. (about as thick as a lamp cord)



Model: CAB25
25' length

\$10⁰⁰



Model: CAB65
65' length

\$17⁰⁰



Model: CAB100
100' length

\$25⁰⁰

Compression Tool

Model: COMTOOL
(Use with COMBNC)



Ratchet Compression Crimping Tool

Model: CRIMPTOOL
(Use with For RG58, 59, 62, and 6)



Stripper Tool

Model: COAXTOOL
Prepares cable for connector.



\$15⁰⁰

9 Camera 12 VDC Power Supplies

- Input : 110V AC
- Output : 12V DC x 9 outputs
- Measurement : 12.5" H X 8" W X 3" D
- Weight : 9 lb.

Model: PWR916
Max AMP load: 16 AMP

\$89⁰⁰

Model: PWR924
Max AMP load: 24 AMP

\$109⁰⁰



Power Supply

Model: PWR1A
12v dc, 1000mA.
Regulated UL.



\$6⁰⁰

18 Camera 12 VDC Power Supplies

- Input : 110V AC
- Output : 12V DC x 18 outputs
- Measurement : 12.5" H X 8" W X 3" D
- Weight : 9 lb.

Model: PWR1816
Max AMP load: 16 AMP

\$119⁰⁰

Model: PWR1824
Max AMP load: 24 AMP

\$139⁰⁰



Power Supply

Model: AC24
120V AC input, 24V AC output



18 Camera 24 VAC Power Supplies

- Input : 110V AC
- Output : 24V AC x 18 outputs
- Measurement : 12.5" H X 8" W X 3" D
- Weight : 11 lb.

Model: PWR1824AC
Max AMP load: 12AMP

\$119⁰⁰



24/12 Power Converter

Model: COV12
Converts 24V AC power
to 12V DC 300 ma for
12V DC cameras.





19" VGA Color Monitor

Model: LCD19

This 19" Color VGA Monitor has excellent picture quality. It features an LCD TFT screen with SXGA (1280x1024) resolution. Integrated speakers provide a space-saving convenience.

Out of Stock

Video Lightning Surge Protector

Model: BNCSP10K

Protects your CCTV equipment from lightning and other power surges by sending any power surge to ground (rather than proceeding down the wire and damaging any further equipment).

Specifications:

Continuous Operating Voltage: 5V

Max Working Voltage: 10V

Nominal Discharging Current: 5KA

Max Discharging Voltage: 10KA (10 kilo-amps or 10,000 amps)

Limit Voltage: 15V

Data Transmission Rate: 10 Mbps

Corresponsive Time: 1ns (nanosecond)

Dimensions (mm): 52 x 28 x 38

Dimensions (inches): 2.05" x 1.5" x 1.1"

Operating Conditions: -25°C to 65°C (13°F to 149°F) < 96% Humidity

Test Standard: IEC61643-21: 2000

Weight: 0.5 lb.



Lifetime
Product
Guarantee

PTZ Data Lightning Surge Protector

Model: CS10K

Use on your PTZ data wire to protect your CCTV equipment from lightning and other power surges by sending any power surge to ground (rather than proceeding down the wire and damaging any further equipment).

\$40⁰⁰

Specifications:

Continuous Operating Voltage: 12V

Nominal Discharging Current: 5KA

Max Discharging Voltage: 10KA (10 kilo-amps or 10,000 amps)

Limit Voltage: 15V

Data Transmission Rate: 10 Mbps

Corresponsive Time: 1ns (nanosecond)

Dimensions (mm): 54 x 25 x 25

Dimensions (inches): 2.13" x 1.0" x 1.0"

Operating Conditions: -25°C to 65°C (13°F to 149°F) < 96% Humidity

Test Standard: IEC61643-21: 2000

Weight: 0.5 lb.



Lifetime
Product
Guarantee

25,000 sq. ft. Facility To Better Serve You.



Toll Free **866-301-7680**



5211 Fairmont St.
Jacksonville, FL 32207
Sales: (904) 805-1581
Fax: (904) 727-3411

www.discount-security-cameras.net