



VR4/8/16LT

VR Series Compatible Embedded DVR

Compatible with iPhone, BlackBerry, & Droid

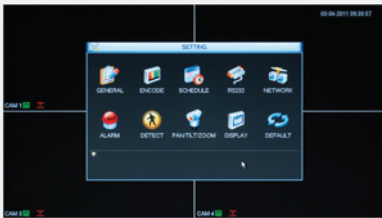


Features

- » 4/8/16 channel real-time recording
- » 4/8/16 channel real-time playback
- » Mouse or front panel control
- » Calendar search
- » Web client allows real-time playback / remote control



Screen Shots



Settings Menu



Playback



Motion Detect Settings



Record Schedule

Model	VR4LT	VR8LT	VR16LT
Operating System	Embedded LINUX		
System Resources	Pentaplex function: live, recording, playback, backup & remote access		
Control Mode	Front panel, USB mouse, IR remote control, Keyboard, Network		
Video Input	4 channel, BNC (1.0Vp-p, 75Ω)	8 channel, BNC (1.0Vp-p, 75Ω)	16 channel, BNC (1.0Vp-p, 75Ω)
Video Output	1 BNC (1.0Vp-p, 75), 1 VGA		1 BNC, 1 VGA, 1 HDMI
Audio Input	2 channel, BNC		4 channel, BNC
Audio Input (continued)	Channel 1 synchronized for bidirectional-talk		
Audio Output	1 channel, BNC (200-2800mV, 30K)		
Display Split	1/4	1/4/8/9	1/4/8/9/16
Display Resolution	Up to 1280×1024		Up to 1920×1080
Privacy Masking	4 self-defined four-sided zones for privacy masking for each camera		
OSD	Camera title, time, video loss, camera lock, motion detection, recording		
Video / Audio Compression	H.264 / G.711		
Recording Resolutions	D1/4CIF (704×480) / CIF (352×240) / QCIF (176×120)		
Recording Speed (Main Stream)	Channel 1: D1/CIF/QCIF (1~30fps); Channels 2~4: CIF/QCIF (1~30fps), D1 (1~7fps)	All Channels; CIF/QCIF (1~30fps), D1 (1~7fps)	Channels 1 & 9: D1/CIF/QCIF (1~30fps); Other Channels: CIF/QCIF (1~30fps), D1 (1~7fps)
Recording Speed (Extra Stream)	QCIF (1~30fps), CIF (1~7fps)		
Recording Mode	Manual, Schedule (Regular, Continuous), MD (Video detection: Motion detection, Camera blank, Video loss), Alarm, Stop		
Trigger Events	Recording, PTZ movement, Tour, Alarm, Email, Spot output		
Motion Detection	Zones: 396 (22×18), Sensitivity: 1~6 (level 6 is highest)		
Video Loss & Camera Blank	Support		
Alarm Input	N/A	8 Channel	16 Channel
Relay Output	N/A	3 Channel	3 Channel
Playback Channel	1/2/4	1/2/4/8	1/2/4/All
Search Mode	Time/Date, Alarm, Motion Detection & Exact search (accurate to second)		
Playback Functions	Play, Pause, Stop, Rewind, Fast play, Slow play, Next file, Previous file, Next camera, Previous camera, Full screen, Repeat, Shuffle, Backup selection, Digital zoom (any size)		
Backup Mode	Flash drive / USB HDD / USB DVD-RW / Network download		
Ethernet	RJ-45 port (10/100M)		
Network Functions	TCP/IP, UDP, DHCP, DNS, IP Filter, PPPoE, DDNS, FTP, Email, Alarm Server		
Hard Disk	1 SATA port, Max 2TB HDD supported		
USB Interface	2 ports (1 for mouse control, 1 for backup)		
RS485	N/A	PTZ Control	PTZ Control
Power Supply	AC 100~240 V, 50/60 Hz		
Working Environment	-10° ~ +55° / 10~90% RH / 86~106kpa		
Dimensions	1U, 325mm×245mm×45mm (W×D×H)		
Weight	2.0KG (without HDD)	2.35KG (without HDD)	